

# Pay Attention to These Problems When Using Fish Food Production Line

## Detail Introduction :

The development of the aquaculture industry has brought the fish feed industry into a period of rapid development. The market demand has risen sharply, and farmers have higher requirements for the quality of fish feed. Only high quality and low price can minimize the growth of fish. Only the fish feed of the high quality can be more popular in the market.

As an experienced feed manufacturer, we deeply understand that ensuring quality is the only effective way to ensure the market size. Therefore, after visiting and investigating, we decided to upgrade our equipment. Finally we decided to use the Fish Feed Production Line for production.

The fish food production line has many significant advantages:

1. The production line is composed of a variety of different equipment, with flexible matching method. The modular structure system is very convenient for installation and disassembly.
2. It is made of food-grade stainless steel, which is long-lasting and durable.
3. The equipment is easy to operate and can be produced without high-end technical personnel.
4. It can be applied to a variety of raw materials, and can be processed to produce a variety of animal feeds, which has a wide range of uses.
5. All accessories are made of internationally renowned brand components, with stable quality and long operation.



The fish food production line has a lot of unparalleled advantages of traditional equipment. It can be adapted to a lot of changes in actual production and processing. Its performance can be maximized in actual production, showing a very powerful superiority.

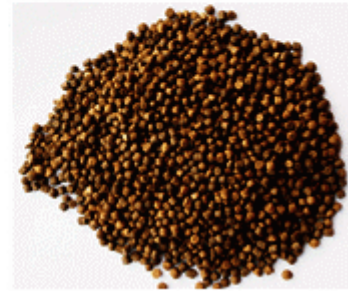
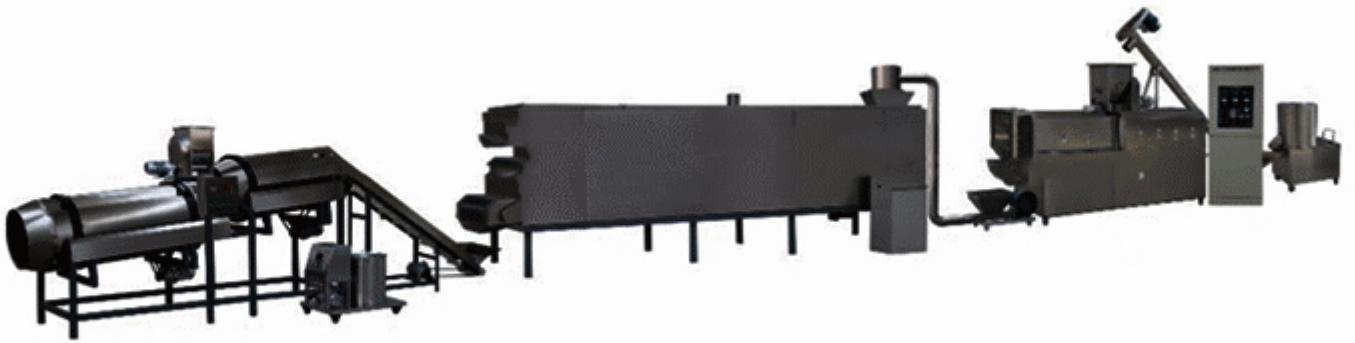
In order to allow more food processing plants to select the most suitable equipment, the manufacturer has produced a variety of different models for everyone to choose from.

Model and specification of fish food production line:

Model	Voltage	Power	Output	Labor Required	Size
01	220/380V	60kw	100-160kg/h	1-2	1.5*0.8*1.4m
02	220/380V	120kw	200-280kg/h	1-2	1.6*0.9*1.5m
03	220/380V	150kw	260-350kg/h	1-2	1.7*1.0*1.6m
04	220/380V	200kw	300-380kg/h	1-2	1.8*1.1*1.7m
05	220/380V	250kw	350-450kg/h	1-2	1.9*1.2*1.8m

The fish food production line is composed of a mixer, a screw conveyor, a twin-screw extruder, a seasoning line, a cooling line, and a packaging machine. The use of the equipment is flexible. If you want to know which of the equipment is particularly good, You can just buy this equipment, of course, you can also contact the manufacturer for customization, and the manufacturer's service is very complete.

In the process of use, only by adopting the correct method of use and reasonable maintenance can the service life of the fish food production line be greatly extended.



Pay attention to these problems when using fish food production line:

Regular cleaning, including daily simple cleaning and monthly thorough cleaning, etc., cleaning can effectively reduce the accumulation of foreign matter, can effectively reduce the wear and tear of the equipment, not only can effectively extend the use time of the equipment, but also always keep it clean and hygienic. The feed produced has a relatively high quality standard.

For inspection and maintenance, the equipment will inevitably have some wear and tear and other problems during the long-term operation of the equipment. Regular inspections, adding lubricating oil, and replacing worn parts can effectively extend the service life of the equipment.

Fish Feed Production Line is a very cost-effective production line. After using this production line, the production efficiency and production quality have been guaranteed. As a leading feed manufacturing industry, we have gained a broader market and development prospects.

We will use the fish food production line for a long time, and hope that manufacturers can develop more advanced equipment with superior performance to provide us with more convenience!